

# VENTILATED BRAKE DISCS | $\frac{3}{4}$ " X 2" SERIES

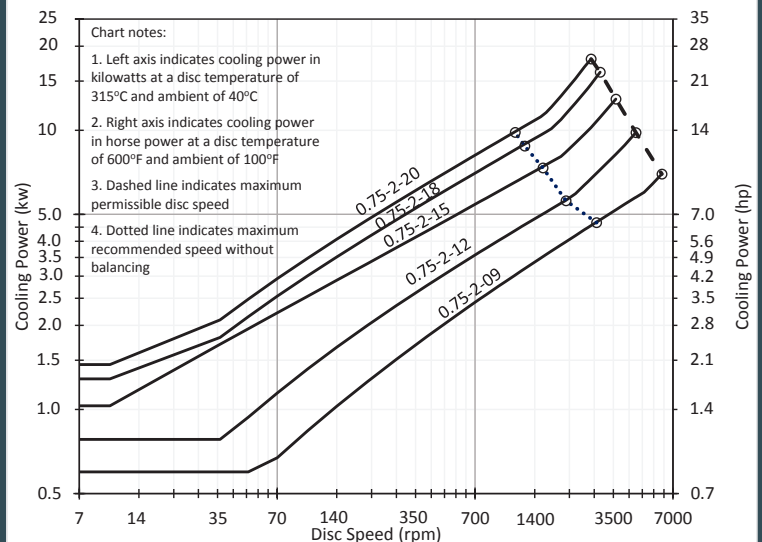
## KEY FEATURES

- Ideal for tensioning & controlled braking applications.
- Intended to be used with the 5019 caliper brake.
- Five sizes available.
- Supplied standard with rough stock bore. Custom mounting details available.
- Available in bronze.
- Available with balancing.

## SPECIFICATIONS

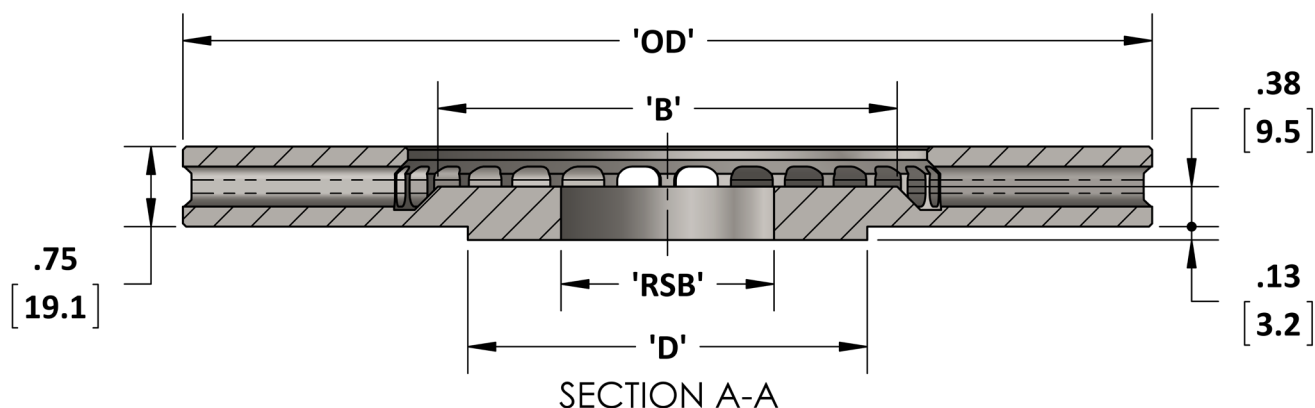
DISC PART NO.	HEAT SINKING CAPACITY	
	(J/K)	(hp-sec/F)
0.75-2-09	1412	1.05
0.75-2-12	1928	1.44
0.75-2-15	2645	1.97
0.75-2-18	3003	2.24
0.75-2-20	3407	2.54

VENTILATED DISC PERFORMANCE  
3/4" X 2" Series



**Note:** Values in this chart are based on test data and empirical analysis. Appropriate derating factors must be included for cases of obstructed air flow such as covers and guards, as well as appropriate margins of safety to account for other uncertainties.

# SPECIFICATIONS

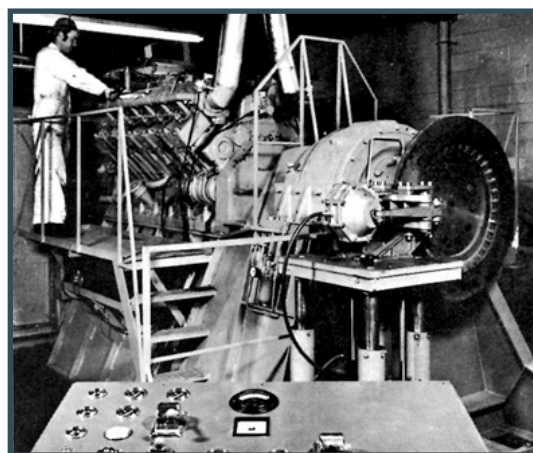


PART NO.	OD in [mm]	DIA 'B' in [mm]	RSB in [mm]	DIA 'D' in [mm]	MAX SPEED	INERTIA lbs-ft <sup>2</sup> [kg-m <sup>2</sup> ]	WEIGHT lbs [kg]
0.75-2-09	9.10 [231]	4.3 [109]	2.00 [50.8]	3.75 [95.3]	6150 rpm	0.6 [.02]	8.1 [3.7]
0.75-2-12	12.10 [307]	7.3 [185]	2.00 [50.8]	5.00 [127.0]	4550 rpm	1.8 [.08]	13.5 [6.1]
0.75-2-15	15.10 [384]	10.4 [364]	2.00 [50.8]	6.00 [152.4]	3600 rpm	4.4 [.18]	21.0 [9.5]
0.75-2-18	18.19 [462]	13.5 [343]	2.00 [50.8]	7.00 [177.8]	3000 rpm	8.5 [.36]	28.8 [13.1]
0.75-2-20	20.10 [511]	15.5 [394]	2.06 [52.3]	8.00 [203.2]	2680 rpm	12.8 [.54]	35.7 [16.2]

Maximum Temperature: 700°F [371°C]

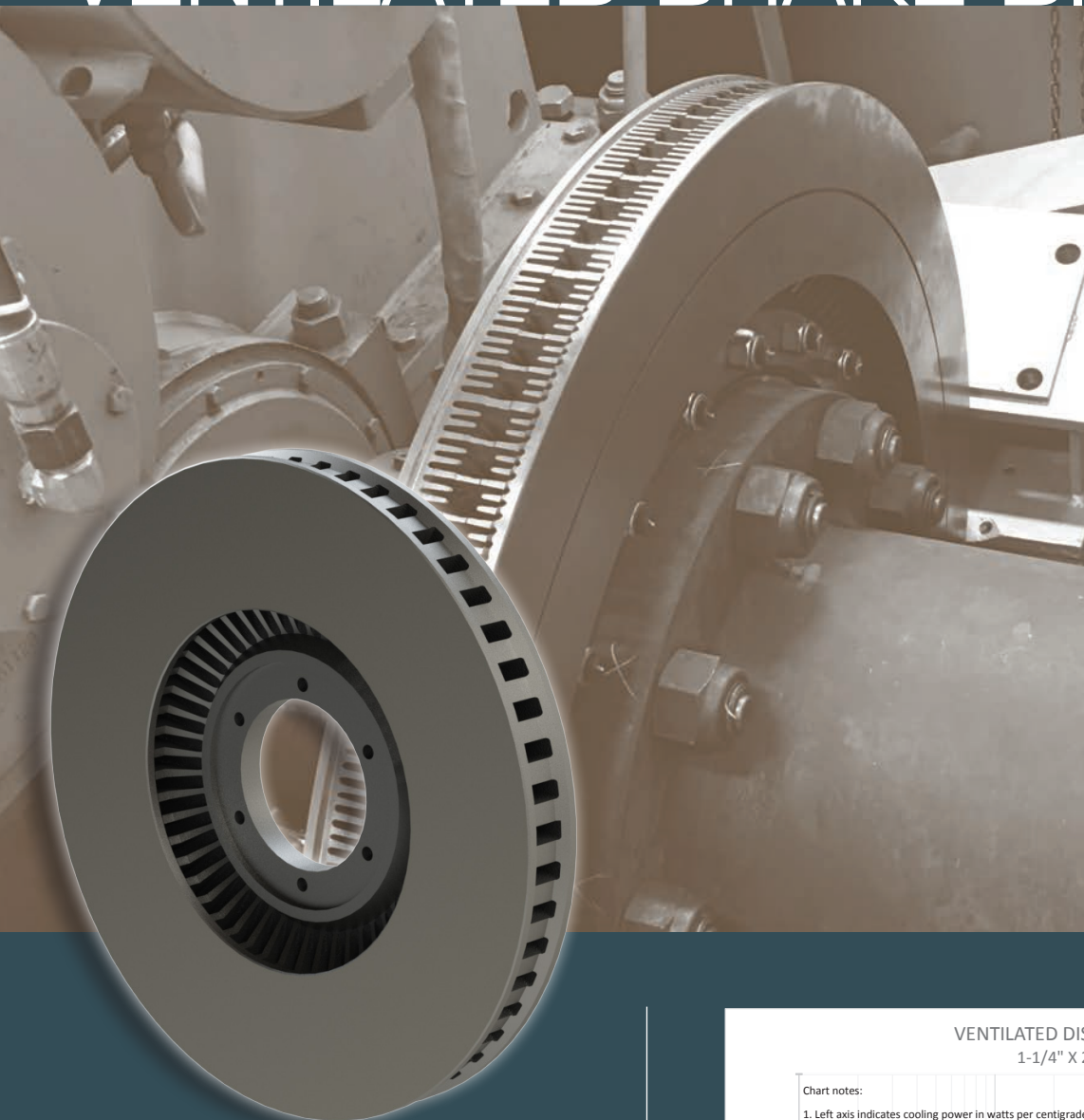
## Ventilated Disc Model Code Key

0.75-2-				
	Added options			
	B	= balanced		
	Mounting detail			
	(blank)	= standard (RSB)		
	10G	= AGMA size 1 gear coupling		
	15G	= AGMA size 1-1/2 gear coupling		
	20G	= AGMA size 2 gear coupling		
	XX	= custom mounting detail		
	Material code			
	(blank)	= standard (D.I.)		
	B	= bronze		
	Disc diameter			
	09	= 9" OD		
	12	= 12" OD		
	15	= 15" OD		
	18	= 18" OD		
	20	= 20" OD		



Kobelt founder conducting dynamometer testing.

# VENTILATED BRAKE DISCS | 1¼" x 2½" SERIES



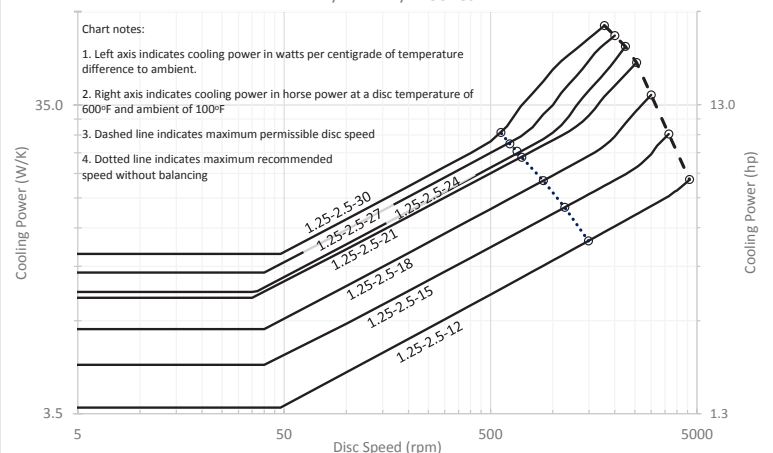
## KEY FEATURES

- Ideal for tensioning & controlled braking applications.
- Intended for use with the 5020 caliper brake.
- Seven sizes available.
- Supplied standard with rough stock bore. Custom mounting details available.
- Available in bronze.
- Available with balancing.

## SPECIFICATIONS

DISC PART NO.	HEAT SINKING CAPACITY	
	(J/K)	(hp-sec/F)
1.25-2.5-12	4191	3.12
1.25-2.5-15	5043	3.76
1.25-2.5-18	6522	4.86
1.25-2.5-21	7957	5.92
1.25-2.5-24	8540	6.36
1.25-2.5-27	8921	6.64
1.25-2.5-30	10893	8.12

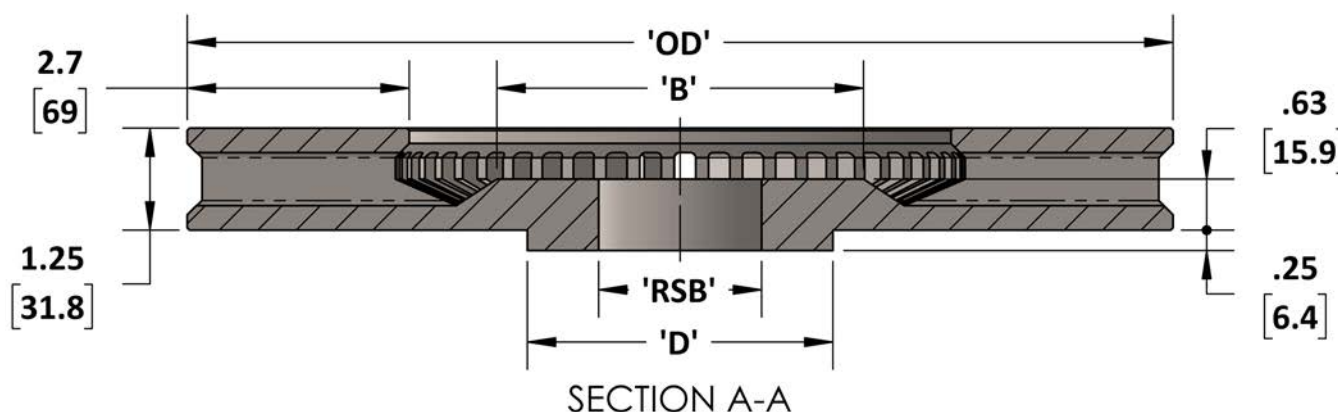
VENTILATED DISC PERFORMANCE  
1-1/4" X 2-1/2" Series



**Note:** Values in this chart are based on test data and empirical analysis. Appropriate derating factors must be included for cases of obstructed air flow such as covers and guards, as well as appropriate margins of safety to account for other uncertainties.



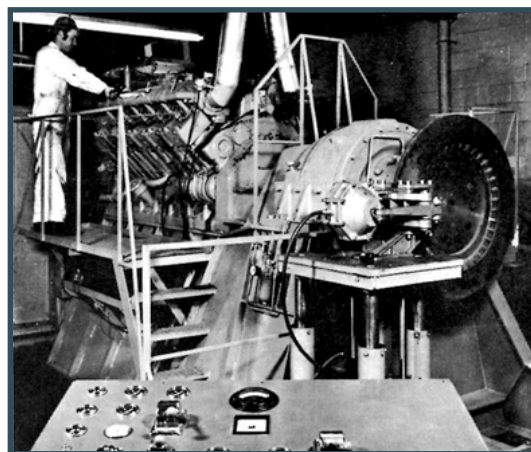
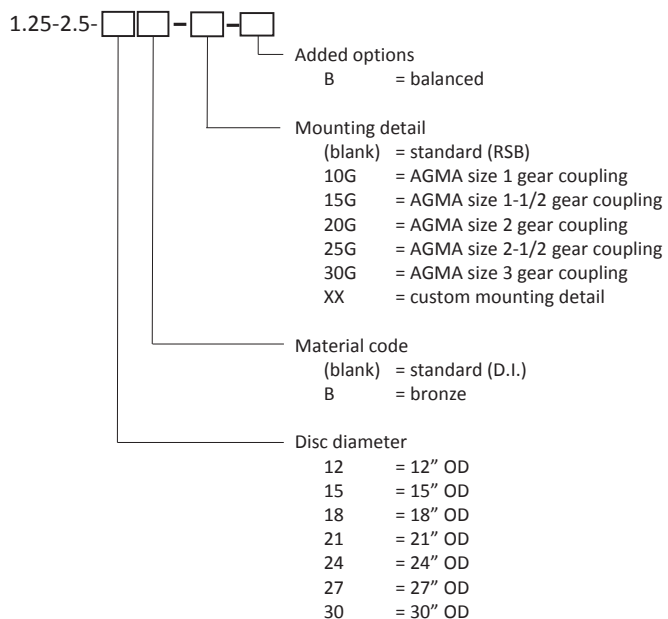
# SPECIFICATIONS



PART NO.	OD in [mm]	DIA 'B' in [mm]	RSB in [mm]	DIA 'D' in [mm]	MAX SPEED	INERTIA lbs-ft <sup>2</sup> [kg-m <sup>2</sup> ]	WEIGHT lbs [kg]
1.25-2.5-12	12.10 [307]	4.5 [114]	2.00 [50.8]	3.75 [95.3]	4600 rpm	3.1 [.13]	22.3 [10.1]
1.25-2.5-15	15.15 [385]	7.5 [191]	2.50 [63.5]	5.00 [127.0]	3650 rpm	6.7 [.28]	31.4 [14.2]
1.25-2.5-18	18.25 [464]	11 [279]	3.00 [76.2]	6.00 [152.4]	3000 rpm	14 [.59]	45.5 [20.7]
1.25-2.5-21	21.13 [537]	13.4 [340]	3.50 [88.9]	9.00 [228.6]	2550 rpm	25 [1.0]	62.2 [28.2]
1.25-2.5-24	24.13 [613]	16.3 [415]	4.00 [102]	8.00 [203.2]	2250 rpm	40 [1.7]	75.1 [34.1]
1.25-2.5-27	27.13 [689]	19.5 [496]	4.00 [102]	12.00 [304.8]	1980 rpm	59 [2.5]	94.9 [43.0]
1.25-2.5-30	30.13 [765]	22.8 [579]	4.50 [114]	10.00 [254.0]	1780 rpm	95 [4.0]	118 [53.6]

Maximum Temperature: 700°F [371°C]

## Ventilated Disc Model Code Key



Kobelt founder conducting dynamometer testing.