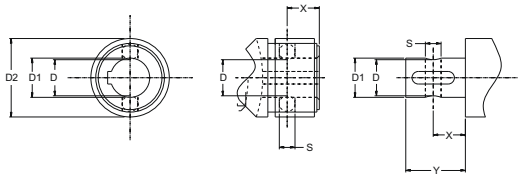


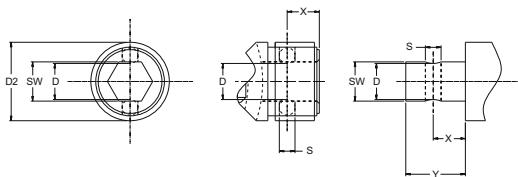
Quick Release Ends

- Quick and easy connection
- Available for all metric styles
- For keyway and hexagonal bores

The Quick Release feature is a special end configuration to allow rapid and easy connection and release of metric universal joints. All Belden metric universal joints can be fitted with the quick release end feature.



Quick release detail for bores with keyway



Quick release detail for hexagonal bores



Quick Release End Details

∅ D2 Joint OD [mm]	∅ D1 [mm]	SW H8 [mm]	∅ D [mm]	Y [mm]	X [mm]	∅ S [mm]
16	8	8	6.3	15	9.5	4
20	10	10	8.7	17	11.5	4
22	10	10	8.7	18	11.5	4
25	12 (14)	12	11 (13)	21	13.5	4
29	14	14	13	21	13.5	4
32	16	16	14.8	25	14	6.3
37	18	18	16	33	19	8
40	20	20	18	33	19	8
47	22	22	20	38	20.5	10
50	25	25	23	38	20.5	10
58	30	30	28	50	25	10
63	30	30	28	50	25	10

Metric Custom Drive Shafts & Custom Universal Joints

- Custom designed to meet customer specifications
- Quick-change feature available

Belden's metric drive shafts can be developed from the metric universal joint to fit a wide range of applications. The overall length can be designed to the customer's exact specification. Custom drive shaft assemblies can be telescoping and spring loaded with a variety of hub end configurations to choose from.

