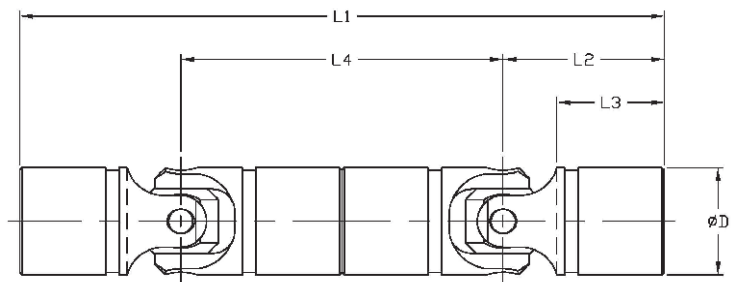


Double Universal Joints

- High-grade alloy steel, also available in stainless steel
- Standard operating angles up to 90°
- Uniform speed ratio between driving and driven shafts (with parallel output shafts)

The Belden double universal joint provides the same reliability and service life as the single universal joint with a maximum combined working angle of 90°. Double universal joints provide accurate positioning and flexibility under higher operating angles. Belden double universal joints are available in a wide variety of materials and finishes. Lubricant retaining boots are recommended for operation in corrosive environments.



Boot grooves are standard. Parts without grooves available upon request.

| Double Universal Joints standard operating angle 90° | | | | | | | |
|---|--------------|----------------|---------------|--------------|-------------|--------------|----------------------------------|
| Part No. | Nominal Size | ø D in [mm] | L1 in [mm] | L2 in [mm] | L3 in [mm] | L4 in [mm] | Max. Operating Torque lb-in [Nm] |
| DUJ-HD375x00 | 3/8" | 0.370 [9.39] | 2.44 [61.9] | 0.88 [22.2] | 0.67 [17.1] | 0.69 [17.5] | 18 [2.1] |
| DUJ-HD500x00 | 1/2" | 0.495 [12.57] | 2.81 [71.4] | 1.00 [25.4] | 0.74 [18.7] | 0.81 [20.6] | 63 [7.1] |
| DUJ-HD625x00 | 5/8" | 0.620 [15.75] | 3.25 [82.6] | 1.13 [28.6] | 0.81 [20.6] | 1.00 [25.4] | 122 [13.7] |
| DUJ-HD750x00 | 3/4" | 0.745 [18.92] | 3.81 [96.8] | 1.34 [34.1] | 0.95 [24.1] | 1.13 [28.6] | 225 [25.4] |
| DUJ-HD875x00 | 7/8" | 0.870 [22.10] | 4.38 [111.1] | 1.50 [38.1] | 1.03 [26.2] | 1.38 [35.0] | 315 [35.6] |
| DUJ-HD1000x00 | 1" | 0.995 [25.27] | 4.88 [123.8] | 1.69 [42.9] | 1.19 [30.2] | 1.50 [38.1] | 405 [45.8] |
| DUJ-HD1125x00 | 1-1/8" | 1.120 [28.45] | 5.13 [130.2] | 1.75 [44.5] | 1.22 [30.9] | 1.63 [41.3] | 585 [66.1] |
| DUJ-HD1250x00 | 1-1/4" | 1.245 [31.62] | 5.63 [142.9] | 1.88 [47.6] | 1.25 [31.8] | 1.88 [47.6] | 940 [106.2] |
| DUJ-HD1500x00 | 1-1/2" | 1.495 [37.97] | 6.56 [166.7] | 2.13 [54.0] | 1.40 [35.6] | 2.31 [58.7] | 1800 [203.4] |
| DUJ-HD1750x00 | 1-3/4" | 1.745 [44.32] | 7.75 [196.9] | 2.50 [63.5] | 1.60 [40.6] | 2.75 [69.9] | 2610 [294.9] |
| DUJ-HD2000x00 | 2" | 1.995 [50.67] | 8.69 [220.7] | 2.75 [69.9] | 1.70 [43.2] | 3.19 [81.0] | 3870 [437.3] |
| Butted Double Universal Joints standard operating angle 90° | | | | | | | |
| UJ-DD375x00 | 3/8" | 0.370 [9.40] | 3.50 [88.9] | 0.88 [22.2] | 0.67 [17.1] | 1.75 [44.5] | 18 [2.0] |
| UJ-DD500x00 | 1/2" | 0.495 [12.57] | 4.00 [101.6] | 1.00 [25.4] | 0.74 [18.7] | 2.00 [50.8] | 63 [7.1] |
| UJ-DD625x00 | 5/8" | 0.620 [15.75] | 4.50 [114.3] | 1.13 [28.6] | 0.81 [20.6] | 2.25 [57.2] | 122 [13.7] |
| UJ-DD750x00 | 3/4" | 0.745 [18.92] | 5.38 [136.5] | 1.34 [34.1] | 0.95 [24.1] | 2.69 [68.3] | 225 [25.4] |
| UJ-DD875x00 | 7/8" | 0.870 [22.10] | 6.00 [152.4] | 1.50 [38.1] | 1.03 [26.2] | 3.00 [76.2] | 315 [35.6] |
| UJ-DD1000x00 | 1" | 0.995 [25.27] | 6.75 [171.5] | 1.69 [42.9] | 1.19 [30.2] | 3.38 [85.7] | 405 [45.8] |
| UJ-DD1125x00 | 1-1/8" | 1.120 [28.45] | 7.00 [177.8] | 1.75 [44.5] | 1.22 [30.9] | 3.50 [88.9] | 585 [66.1] |
| UJ-DD1250x00 | 1-1/4" | 1.245 [31.62] | 7.50 [190.5] | 1.88 [47.6] | 1.25 [31.8] | 3.75 [95.3] | 936 [105.8] |
| UJ-DD1500x00 | 1-1/2" | 1.495 [37.97] | 8.50 [215.9] | 2.13 [54.0] | 1.40 [35.6] | 4.25 [108.0] | 1800 [203.4] |
| UJ-DD1750x00 | 1-3/4" | 1.745 [44.32] | 10.00 [254.0] | 2.50 [63.5] | 1.60 [40.6] | 5.00 [127.0] | 2610 [294.9] |
| UJ-DD2000x00 | 2" | 1.995 [50.67] | 11.00 [279.4] | 2.75 [69.9] | 1.70 [43.2] | 5.50 [139.7] | 3870 [437.3] |

Also available in stainless steel, upon request.
Metric values shown for reference only